

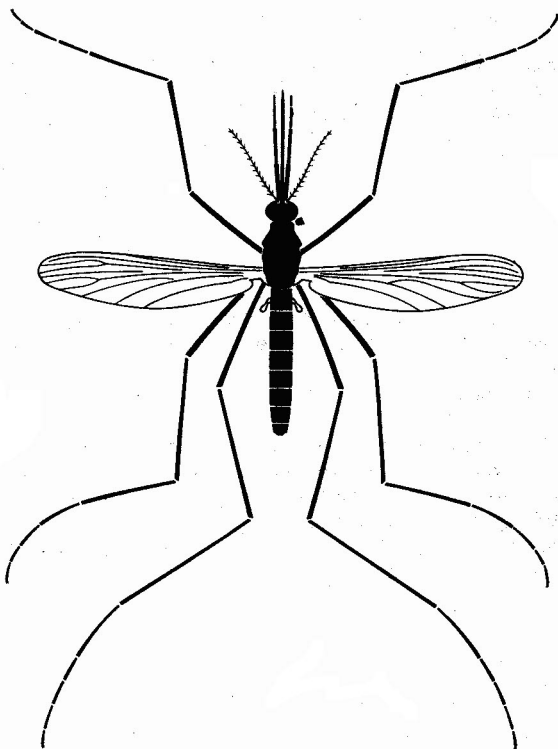
VII Congrès International de Parasitologie
International Congress of Parasitology

Paris Août 20-24 August

*Ms Roux
Bordeaux
10.09.90.*

BULLETIN

**DE LA SOCIÉTÉ FRANÇAISE
DE PARASITOLOGIE**



Résumés - Abstracts

ANNÉE 1990 — TOME 8 — Supplément n° 1

S 3 . A - **Systématique spécifique et supraspécifique.**
- **Specific and supraspecific systematics.**

S 3 . A 12

P.

CLASSIFICATION OF STRONGYLIDAE (NEMATODA: STRONGYLOIDEA) OF HORSES

G.M.Dvoynos, V.A.Marchenko. Institute of Zoology, Academy of Sciences of Ukr.SSR, 252630, Kiev, Lenin st., 15, USSR

Strongylidae - Horses - Classification

The research is aimed to revise Strongylidae of horses. Morphology of 51 species of adult Strongylidae has been studied as well as larvae of the late 4th stage (L4) of 23 Cyathostominae species and 7 Strongylinae ones. Similarity of L4 is found in: Poteriostomum imparidentatum and Cylicodontophorus mettami, C.euproctus, C.mongolica and Cylicocycclus ultrajectinus; Petrovinema poculatum and Cylicocycclus elongatus and Cylicostephanus spp.; Triodontophorus spp. and Craterostomum acuticaudatum and Cyathostominae spp. But, on the whole, no characters of the genus rank are found in L4. The presented classification differs from that suggested by Hartwich (1986) as follows: 1. C.aegyptiacus is considered within the genus Coronocycclus; 2. the following genera are considered as valid ones: Cylicotetrapedon (C.bidentatus, C.asymmetricus); Skriabinodentus (S.caragandicus, S.tshoijsi), whose each branch of the dorsal ray is divided only into two accessory ones; Tridentoinfundibulum (T.qobi = Cylicostephanus torbertae), whose elements of the internal leaf-crown are fused into a ring; Hsiungia (H.pekingensis), who has the similar number of elements of the external and internal crowns, elements of the latter being longer; 3. the genus Cylicodontophorus in the Lichtenfels (1975) comprehension is supplemented by C.mongolica. The composition of Caballonema, Cylindropharynx, Cylicocycclus, Poteriostomum and Gyalocephalus genera is unchanged. The genera Strongylus, Alfortia and Delafondia are valid.